



Welcome
to P3

Teacher: Mrs McLean

Classroom Values

Promote
Independence and
initiative

Show respect for
others and
property.

Build confidence
and increase self-
esteem

Celebrate our
achievements

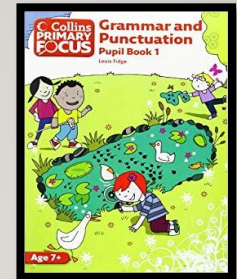
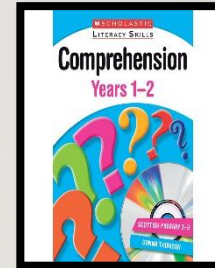
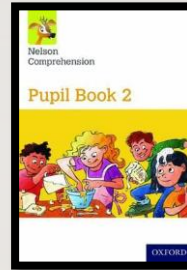
Develop
social skills

Build resilience – F.A.I.L. (First Attempts in Learning)

Take responsibility for our actions

LITERACY

- Phonics and Spellings – follow the Synthetic Phonics Scheme Jolly Grammar . Weekly spelling lists incorporate high frequency words and focus on a particular phonics sound. These are tested every Friday.
- Grammar – P3 sentence structure, opposites, compound words, nouns, verbs and adjectives.
- Comprehension – literal, inference, prediction and retelling skills through varied styles of text.
- Creative Writing – teacher guidance to write letters, stories, recounts, reports, poems and instructions.
- Talking and Listening – retelling stories, poems and events. Listening to and valuing others' ideas.



READING



Pupils' reading is assessed to establish their reading level and to formulate reading groups. Reading groups may be re-organized throughout the year depending on individual pupil's progress.

Pupils read in class three times per week. Sight reading, using phonics sounds to decode words, comprehension skills and identifying grammar points are incorporated into each reading session. This prepared reading is allocated as the reading homework. Pupils complete a written reading activities in class. This is used as an informal way of assessing their understanding of the text.

Please listen to your child reading, talk about the book and sign the Reading Record Book every night.

OUR STRATEGIES FOR TEACHING NUMERACY

PRACTICAL ACTIVITIES

I.C.T. SKILLS

GAMES

WRITTEN RECORDING

MENTAL STRATEGIES

PROBLEM SOLVING



Number

- Number bonds to 20
- Odd and even numbers to 100
- Money up to 99p
- Fractions – halves of shapes and numbers
- Add and subtract tens and units
- Counting in multiples of two, five and ten
- Using symbols $<$ $>$ $=$
- Rounding numbers to the nearest ten



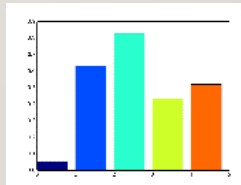
Time and Measures



- O' clock, half past and a quarter past to in analogue and digital time
- Days, months and seasons
- Weight, Capacity and Length – ordering amounts and measuring with non-standard units

Data Handling

- Gathering information using tally marks
- Pictograms and Block Graphs
- Intersecting Venn Diagram
- Two box Carroll Diagram



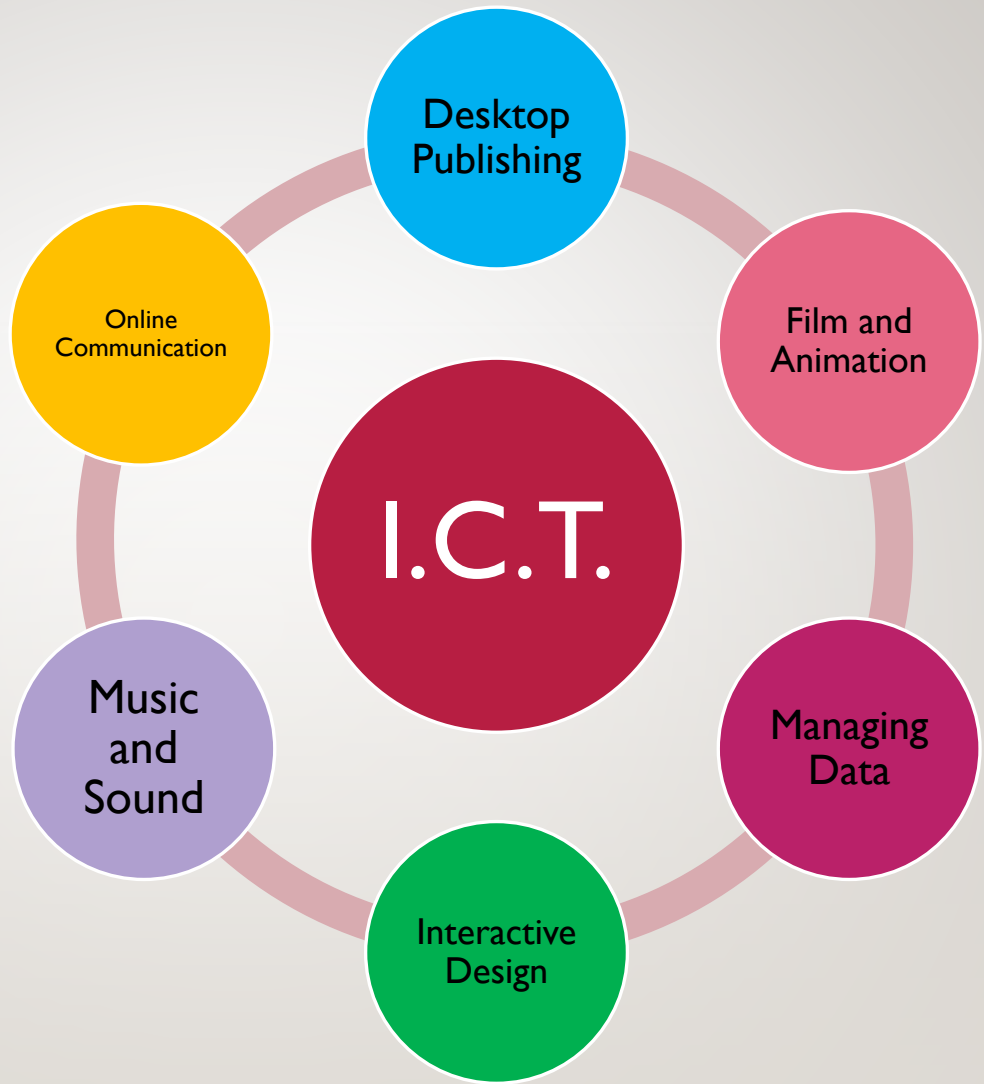
Shape, Position and Movement

- Recognising and naming 2D and 3D shapes
- Symmetry of pictures and shapes.
- Directions and prepositions





Safety online is an integral part of the I.C.T. curriculum.



The World Around Us



- Seasonal changes
- Parts of trees and their function
- Effects of deforestation
- Animal habitats

Plants
and
Seasons

- The parts of a castle.
- Defense and weapons used in battle.
- Hierarchy of people living in a castle .

Castles

Space

- Moon Landings
- Solar System
- Astronauts and their roles

Famous
Figures

- Florence Nightingale
- Neil Armstrong

S.T.E.M.
Science
Technology
Engineering
Maths

CREATIVE SUBJECTS



Music – Listen and respond to music, sing songs, play percussion instruments and compose sound stories.



Art activities are taught through TWAU and PDMU topics.



Drama is taught through Literacy and I.C.T. Pupils grow in confidence by performing in front of their peers.



ASSESSMENT

Term One

- Reading Running Record in September.
- CAT4 Standardised Test in October

Term Two

- Mid year class assessments (Spellings, Mental Maths and Comprehension)
- Reading Running Record in January
- Salford Reading Test in March (determine a reading age)

Term Three

- End of year class assessments
- Reading Running Record in June
- Phonics, Spellings and Mental Maths assessments in June

Informal assessment tasks and tests will be continuous throughout the year.

HOMWORK TIMETABLE

Monday	Written Literacy/Numeracy homework Reading Spellings Learn Mental Maths facts
Tuesday	Written Literacy/Numeracy homework Reading Spellings Learn Mental Maths facts
Wednesday	Written Literacy/Numeracy homework Reading Spellings Learn Mental Maths facts
Thursday	Spellings Mental Maths facts
Friday	Correct mistakes in the Friday Assessment Book.

All content has been covered in class. P3 homework should take 20 – 30 minutes to complete. **Reading, spellings and learning maths facts are the most important elements of homework.**

HEALTHY LIFESTYLES

- **Water bottles** Pupils have access to them all day.

- **Healthy Break Policy**

- **Healthy lunchboxes**



- **P.E.** - Twice per week for

- **PDMU Topics** – Take Care, Be Safe,
Feelings and Emotions
Pantasaurus – NSPCC
Developing positive attitudes to
learning
Friendship





CHILD PROTECTION AND SAFEGUARDING TEAM



Principal and Designated Teacher: Mrs Ferguson

Deputy Designated Teacher: Mrs Hobson (Mrs McLean – Interim)

Chair of Board of Governors: Rev S Simpson

Designated Governor for CP: Dr. M Gawn

DATES FOR YOUR DIARY IN TERM ONE

- 14th September School Photographs
- 27th September McMillan Coffee Afternoon
- 29th September School Development Day
- 4th October School Development Day
- 18th October Parent Consultations
- 19th October Harvest Assembly
- 25/26th October Parent Consultations
- 30th October – Mid – Term Holiday Week
- 12th December Christmas Carol Service



Thank you for attending and I
look forward to a positive year
ahead.

